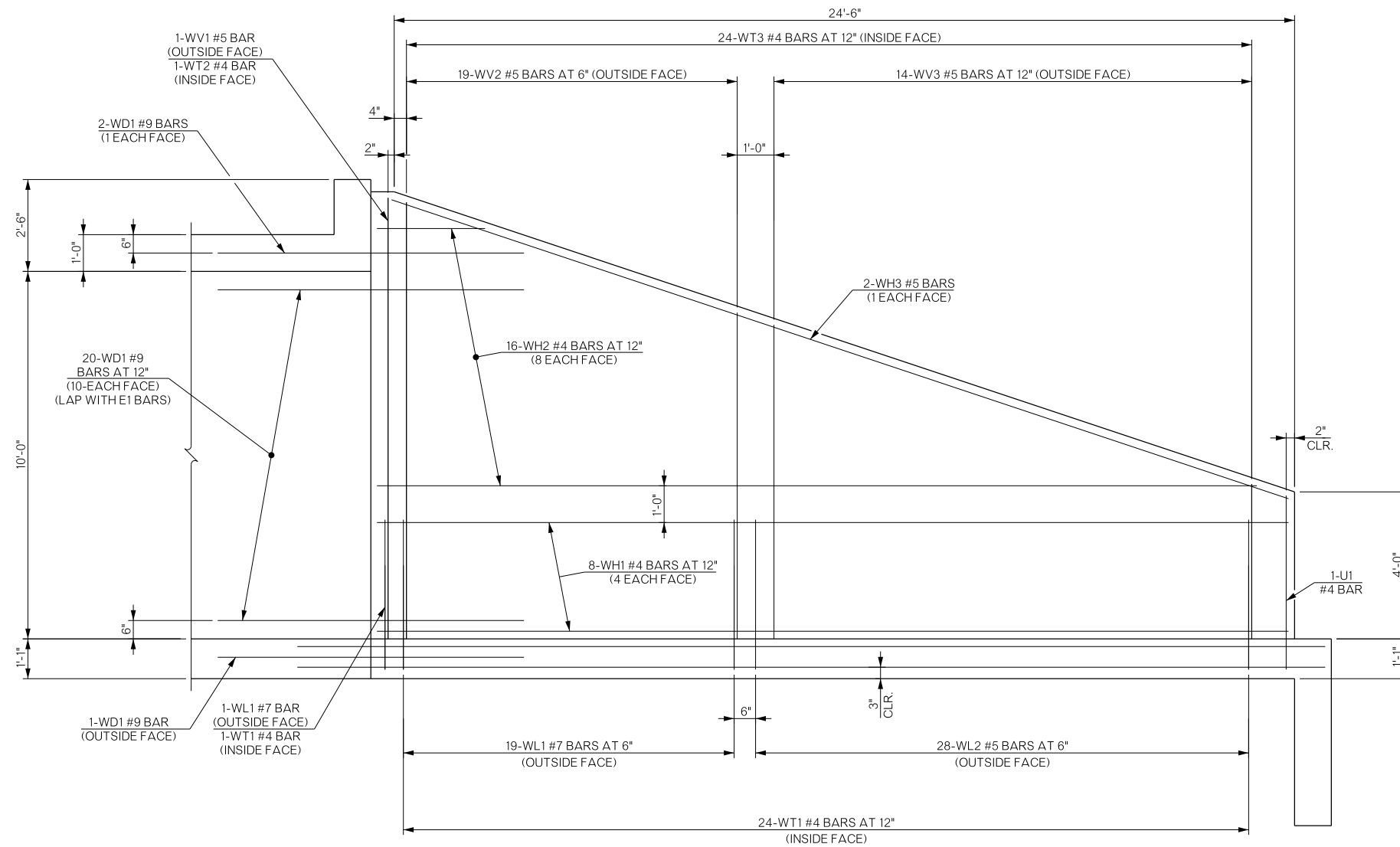
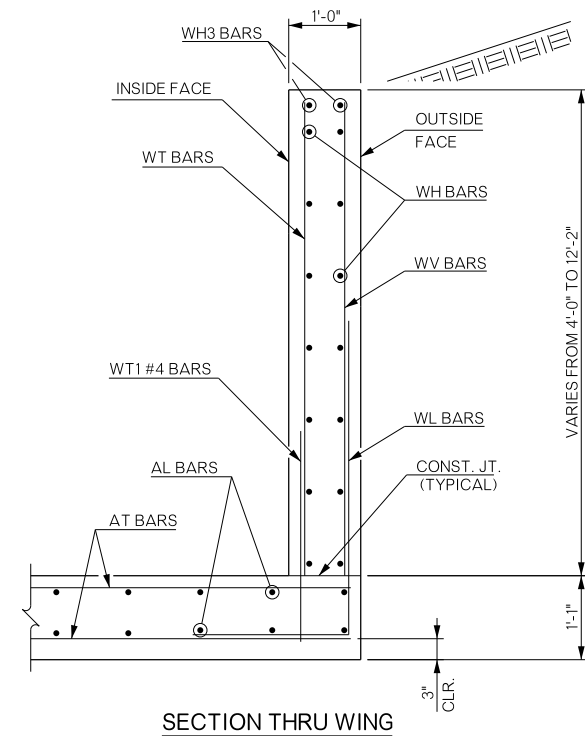


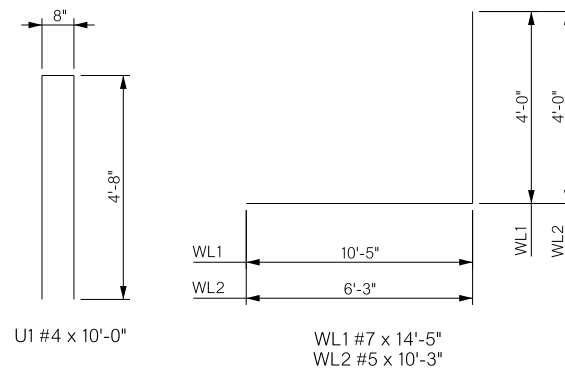
REVISIONS		
REV. NO.	DESCRIPTION	DATE



SHORT WING ELEVATION



SECTION THRU WING



BAR BENDS

SHORT WINGWALL BAR LIST					
GRADE 60 REINFORCING					
MARK	SIZE	NO.	FORM	LENGTH	REMARKS
U1	#4	1	BNT.	10'-0"	
WD1	#9	23	STR.	8'-4"	
WH1	#4	8	STR.	24'-9"	
WH2	#4	16	STR.	13'-5" AVG.	2'-11" to 23'-11"
WH3	#5	2	STR.	25'-8"	
WL1	#7	20	BNT.	14'-5"	
WL2	#5	28	BNT.	10'-3"	
WT1	#4	25	STR.	2'-10"	
WT2	#4	1	STR.	12'-0"	
WT3	#4	24	STR.	8'-0" AVG.	4'-2" to 11'-10"
WV1	#5	1	STR.	12'-0"	
WV2	#5	19	STR.	10'-4" AVG.	8'-10" to 11'-10"
WV3	#5	14	STR.	6'-4" AVG.	4'-2" to 8'-6"

SHORT WINGWALL QUANTITIES		
ITEM	UNIT	TOTAL
CLASS AA CONCRETE	C.Y.	7.70
REINFORCING STEEL	LBS.	2,370.00

BRIDGE "A" US-277 OVER UNNAMED CREEK	COMANCHE COUNTY	Design	MLC	10/16
DETAILS OF R.C.B. EXTENSION SHEET 5 OF 6		Detail	GLB	10/16
		Check	DAH	04/17
STATE OF OKLAHOMA		Squad	HARJO	
DEPARTMENT OF TRANSPORTATION		Engr.	MOLLA-ESMAIL	
JOB/PIECE NO. 27968(04)	SHEET NO. B006			